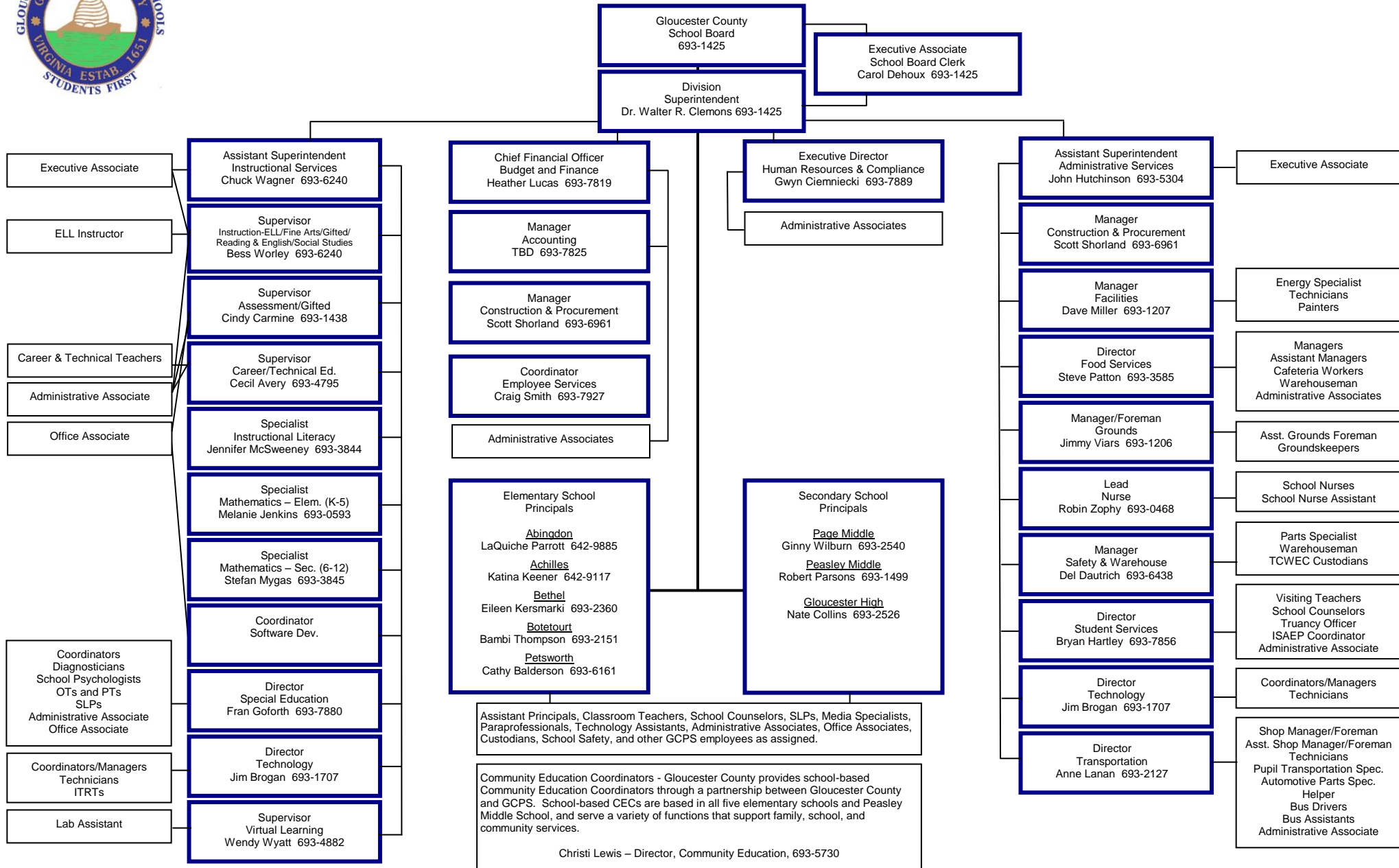




# Gloucester County Public Schools Organizational Chart File No. CCA-R



ADOPTED: July 1, 1991

REVISED: March 9, 1993; July 1, 1995; July 11, 1995; February 9, 1999; July 18, 2001; November 13, 2001; November 12, 2002; May 13, 2003; October 12, 2004; September 11, 2007; September 9, 2008; October 11, 2011; August 14, 2012; August 13, 2013; September 9, 2014; December 8, 2015